



## Stay safe and avoid danger

- **STOP**
- **THINK**
- **CALL**

These 3 steps could save a life or prevent serious injury.



Jersey Electricity

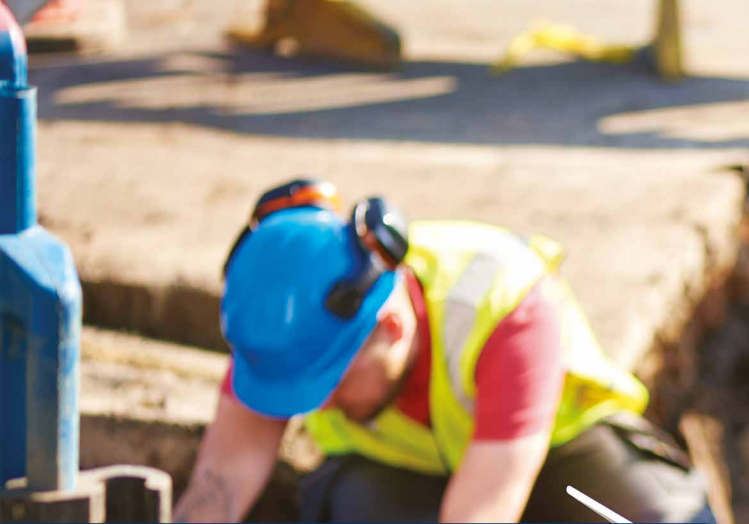


## Incoming service cable and metering equipment

It is important to be **aware** of the position of **all** service cables and associated metering equipment coming into your home. For yours and others safety, you must not interfere with this equipment.

If you need to work near to this equipment, contact JE for **free advice** before you start.

Digging on your property or simply knocking down a wall can be dangerous if you haven't considered your utilities.



“Jersey Electricity takes public safety very seriously and we are here to help you stay safe”

## Underground cables

**Before** you carry out any excavations, demolition or refurbishment on your property **always** contact JE first to obtain records of the underground mains and services which may be within your area of works.

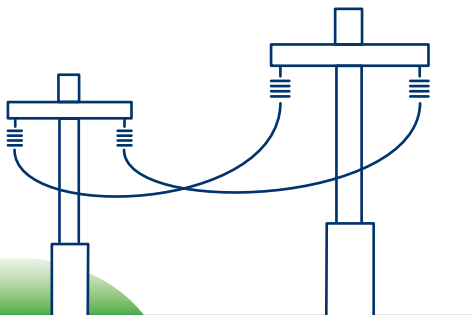
For more guidance, review the working safely and avoiding danger from underground services and other utility apparatus online at [www.gov.je](http://www.gov.je)



## Overhead lines

If you are working within 3 metres of an overhead line, you must contact JE before putting up scaffolding, ladders or hoists.

JE will arrange **free protection** and **safety advice** before works begin.



# Top Tips

- Plan ahead - contact JE as soon as you know that disconnection, moving or removal services to site will be required
- Before starting any excavations / demolitions at a property, request the cable records (these are **free of charge**)
- Don't risk anyone's safety – if in doubt ring JE on **505460** for assistance or **505050** in an emergency
- Treat all JE equipment as "LIVE" unless confirmed in writing by JE to be no longer connected to the network
- Always carry long objects such as ladders, scaffold or pool poles horizontally if overhead lines are nearby
- If any trees are encroaching an overhead powerline or service on the property, contact JE to arrange for us to cut them **free of charge**
- Always use a C.A.T. (Cable Avoidance Tool) prior to any ground works commencing in accordance with the HSI Guidelines



**For more information  
on safety guidelines,  
please scan the QR code**

The Powerhouse,  
PO Box 45, Queens Road,  
St Helier, Jersey, JE4 8NY

Tel: 01534 505460

Email: [jec@jec.co.uk](mailto:jec@jec.co.uk)

If you think  
Jersey Electricity  
equipment has  
been damaged  
**STOP!**



Ensure all personnel  
leave the area and  
call JE on **01534 505050**  
or **01534 505460**

H&S1123

