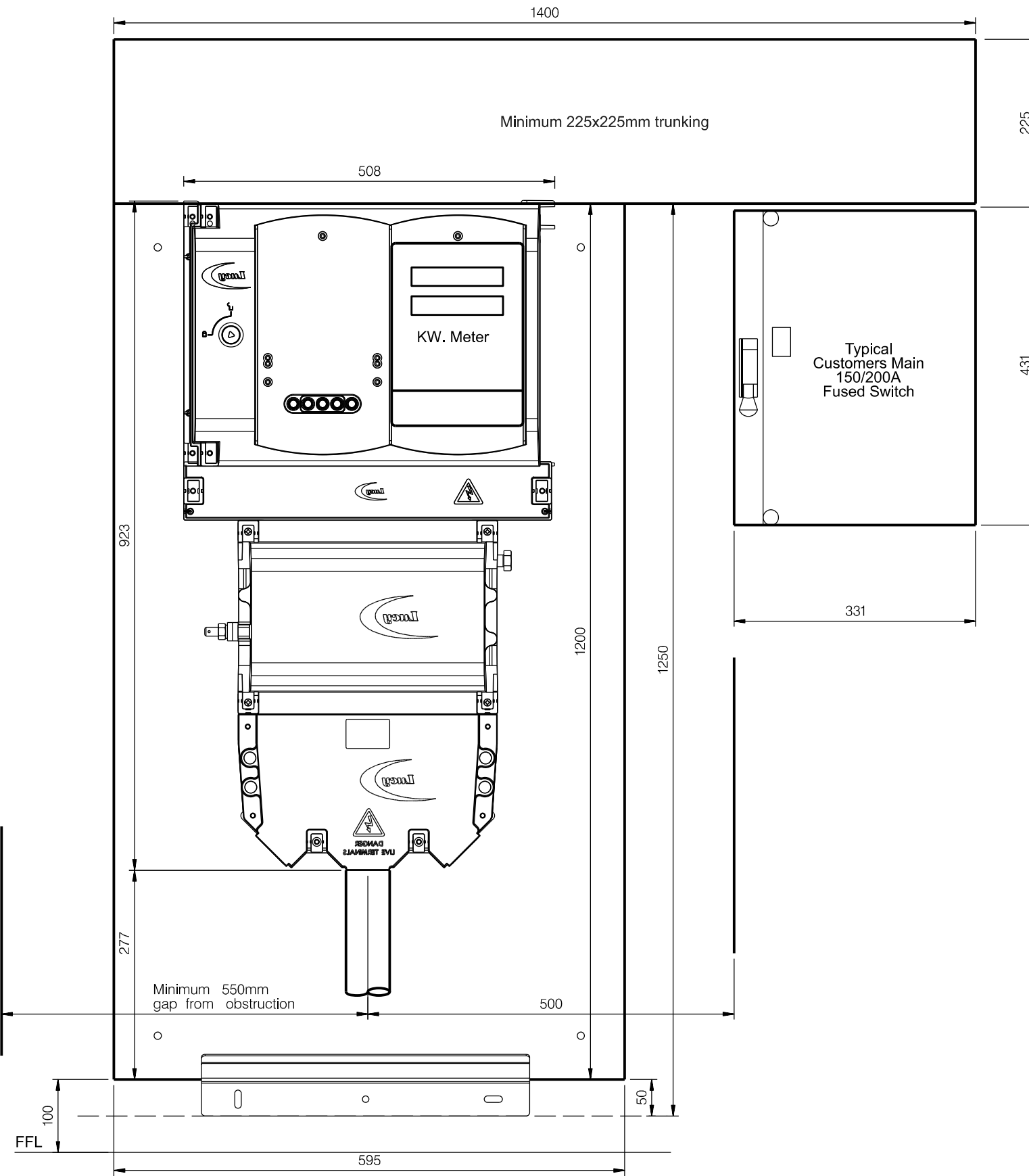


Side Elevation



Front View

Notes

1. Any proposed alteration to the layout of the cut-out and metering arrangements to be agreed with Jersey Electricity PLC. before installation.
2. See Jersey Electricity PLC. Drawing no. 35-R21 for cupboard construction details.
3. Meter cabinet hinges on left hand side.
4. The applicant must make provision for coax cable to be run from the service position to the exterior of the building at a location where a discreet GPRS aerial can be mounted should there be insufficient signal strength at the service position.
5. The new supply position must be electrically safe and environmentally secure. JE plant and equipment shall only be fixed directly onto a visible 16mm marine ply backboard. The applicant's contractor shall ensure the backboard is adequately fixed to any substrate layers. It being understood that this will not be to the detriment of the enclosure's fire rating in compliance with the relevant building byelaws.
6. Tri-rated cable to connect the customer main fused switch to the lucy

Rev	Date	Description	Drn	Appd
M	24-04-2024	Notes updated and Trunking dimentions updated	TSB	MM
L	08-12-2023	Dimensions Altered	AB	HM
K	21-11-2023	Minimum distance to obstruction updated	TSB	ML
J	25-08-23	Fused switch moved to right hand side	TSB	ML
H	23-05-22	Changed note 4 "GSM" to "GPRS"	AB	NS
G	29-04-22	Added note and Label about "16mm Marine Ply Mount"	AB	NS
F	11-05-21	150min dimension removed and 500 added	TSB	ML
E	14-12-11	Dimensions to Bottom of Board	TB	AM
D	15-09-11	Dimensions to Bottom of Board	TB	AM


Project

Energy Division

Title

General Arrangement Of Metering
For 200A Industrial Service
With Reduced Height

The Intellectual Property Rights (IPR) ie. Patents, Copyright, Trade Secrets, Design Rights etc., remain strictly the property of 'Jersey Electricity Company plc' and may not be copied and /or reproduced in any form without their 'Express Permission'.



Jersey Electricity plc

The Powerhouse PO Box 45 Queen's Road St. Helier Jersey JE4 8NY.
Tel - 01534 505000 Fax - 01534 505011 e-mail - jec@jec.co.uk

Drg. No.

206-N21-6

Revision

M